

URBAN FRINGE / PERIURBAN LANDSCAPE TYPE

The Proposed Development falls within a Urban Fringe / Periurban area. The SDCCDP Green Infrastructure (GI) in Section 4.2.3 Climate Resilience describes Urban Greening as:

'Interventions which modify the quality, quantity and accessibility of urban green spaces'

Urban Greening can be achieved by:

'Establishing new urban spaces or by changing the characteristics of existing ones. The process can refer to a broad spectrum of measures which can be implemented at different scales in private or public spaces. These can include: pocket parks, urban gardens, green roofs/walls, recreational and urban/community gardening and may include facilitated access to urban woodlands, forests and natural wildlife areas.'

In addition, the Proposed Development considers the following key ecosystem services to integrate in the GI design and strategy:

1. Interception and reduction of potential pollutants from urban sources
2. Reduce runoff volumes
3. Provision of habitat refuge
4. Ecological corridors
5. Amenity value

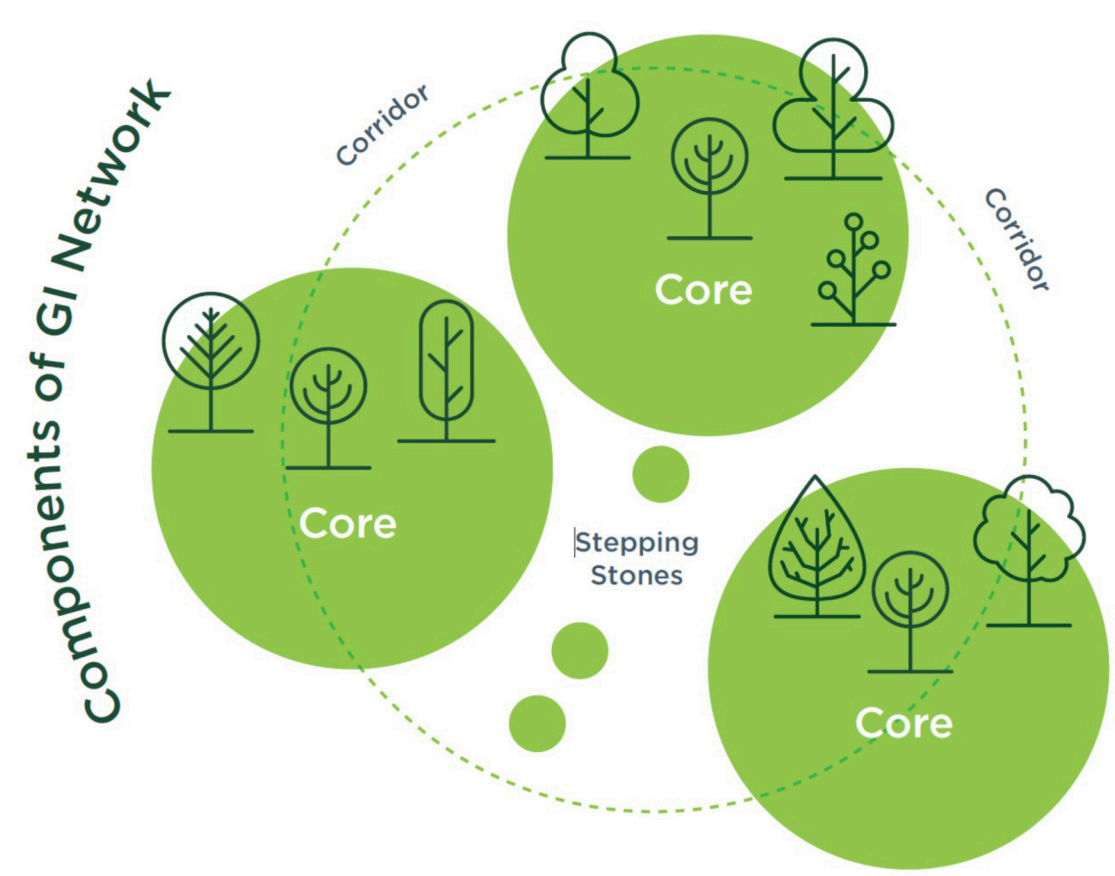
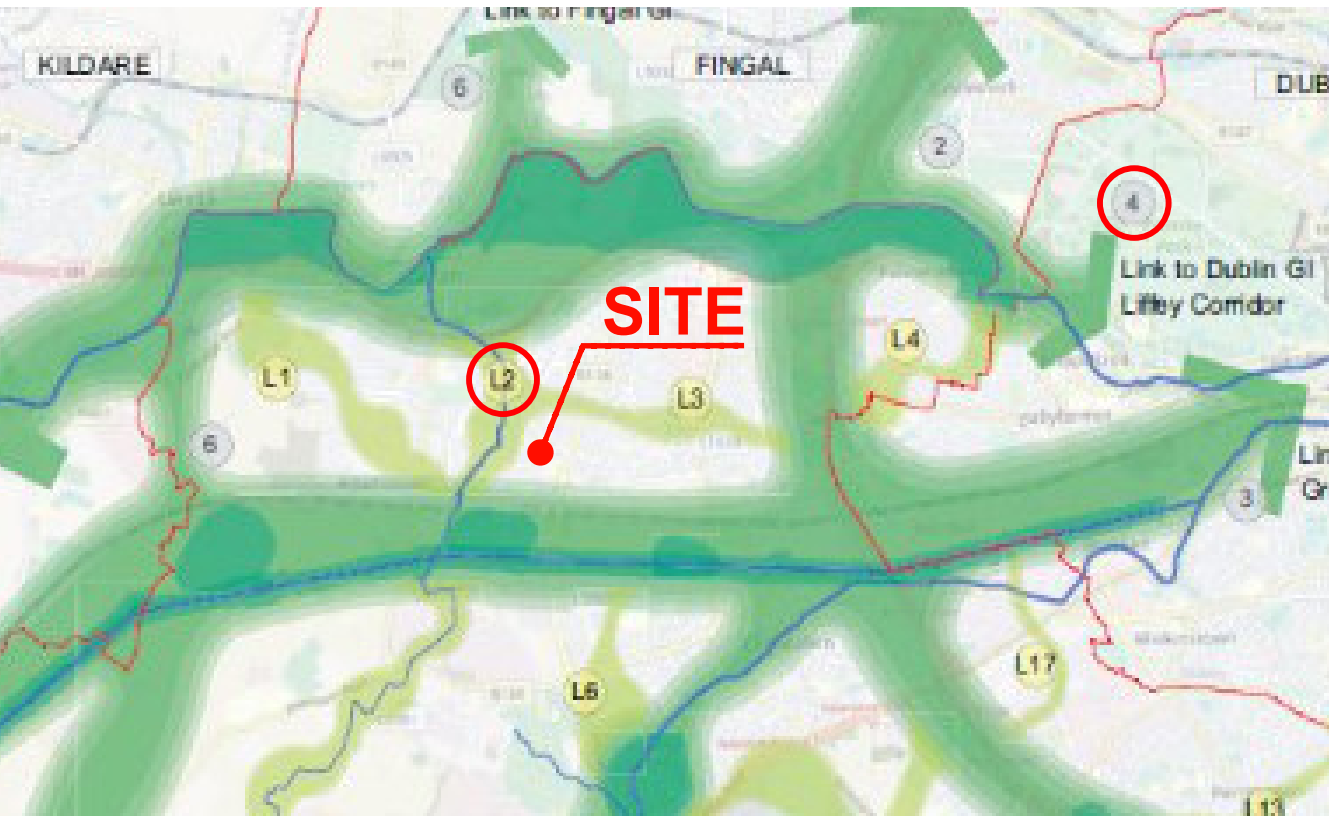
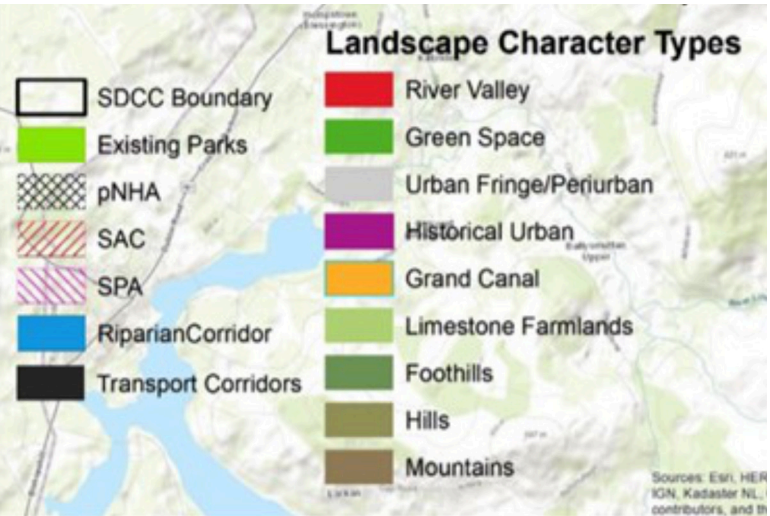
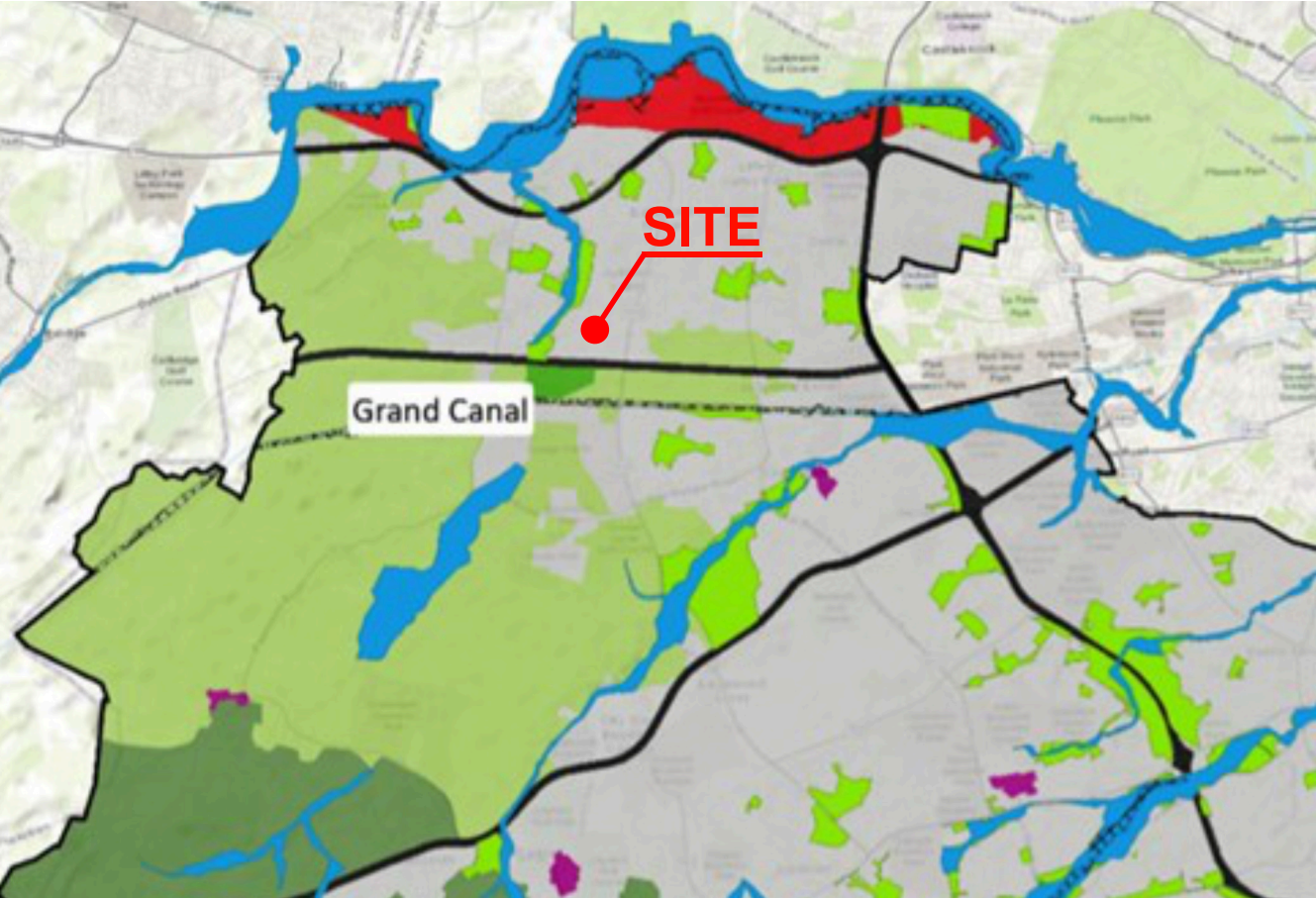


Figure 4.2: Components in a GI Network



COMPONENTS OF THE GREEN INFRASTRUCTURE NETWORK

SDCCDP considers that:

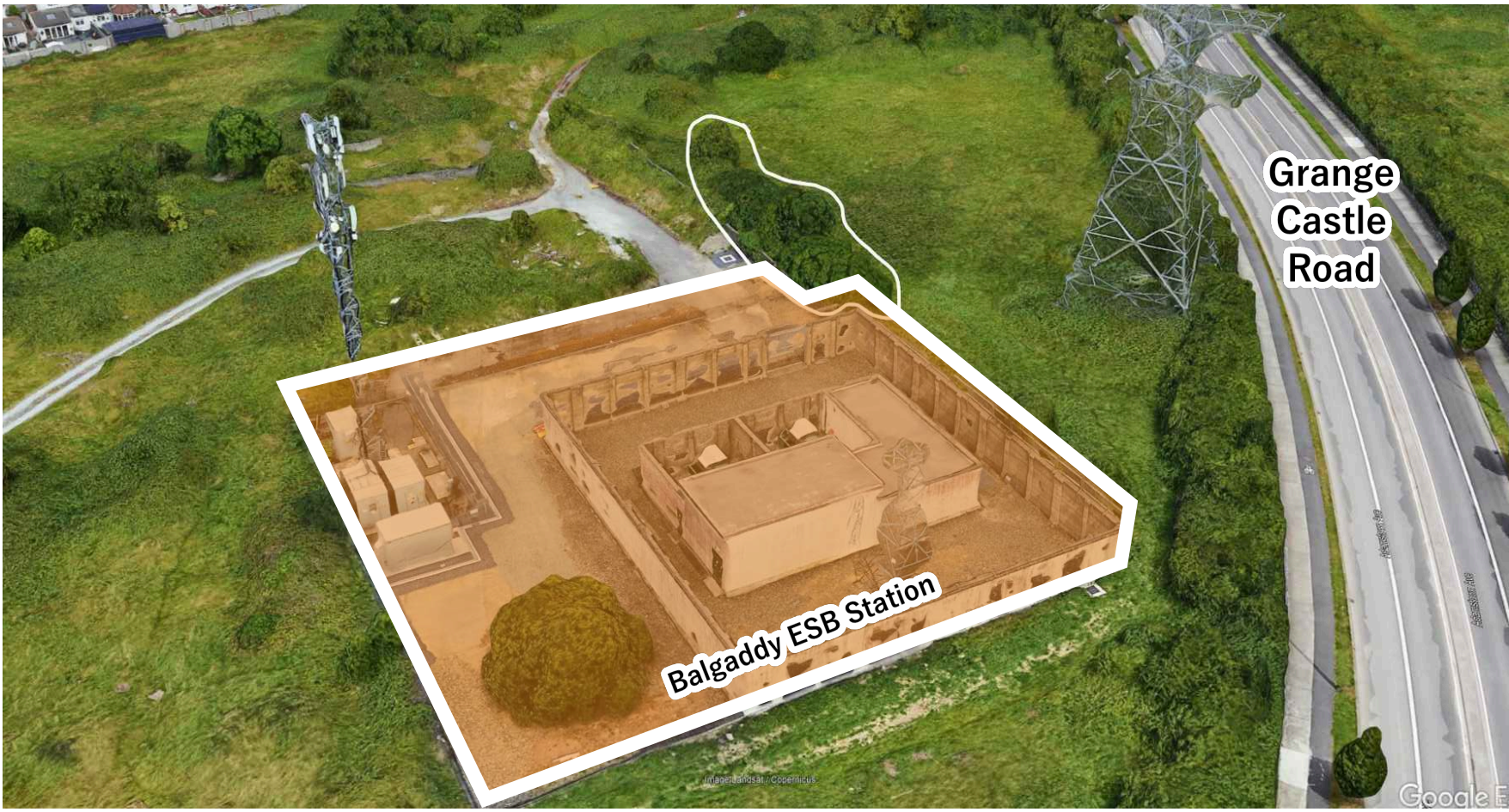
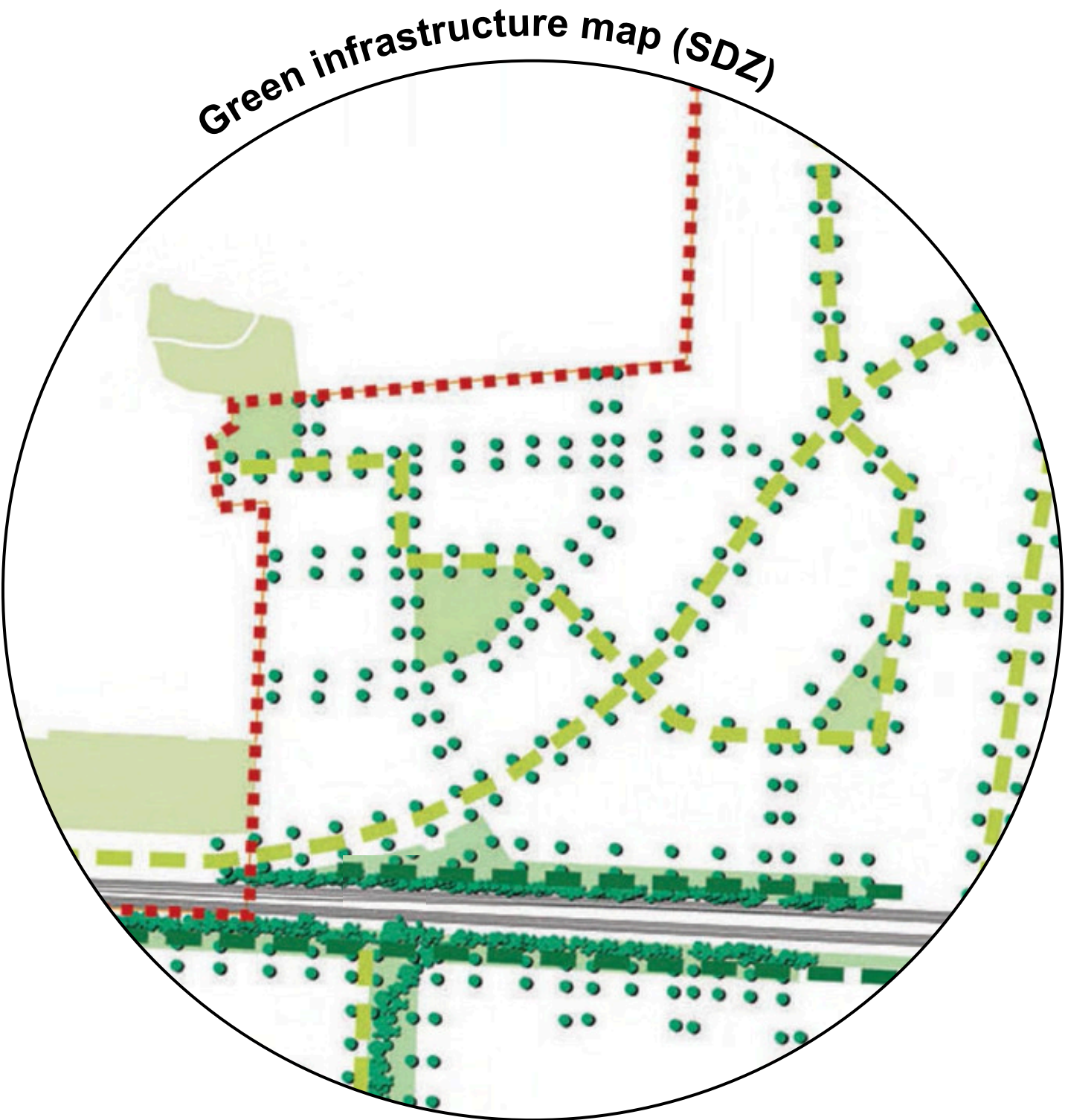
'Green infrastructure networks are spatially defined in terms of several common components. Core Areas serve as anchors within a GI network.'

This proposal incorporates the SDCCDP GI schematic network to bring the same language and components into the design.

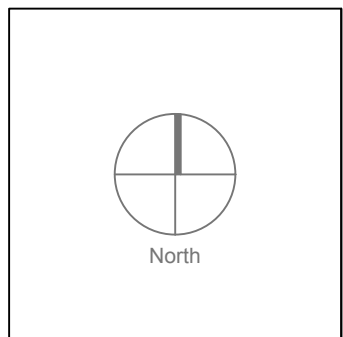
The Cores are the major amenity spaces of public use with the addition of great value in terms of SuDS.

The boundaries of the Proposed Development are a key element at enhancing the existing ecosystems and their links to the wider GI network.

A series of urban links connect the Cores with the existing boundary corridors where retaining and protecting the existing vegetation as much as possible by filling in the gaps and install additional planting.



Rev.	Date	Note
00.	00.00.0000	TBC



General Notes

Doyle & O'Troithigh Landscape Architecture	Project Name Kishoge Part 10 Application		Drawing Name Site 3 Green Infrastructure Context.	
	Status	Planning	Drawing No.	GI-01-PP
	Project No.	23-021	Revision No.	00
	Scale	NTS	Drawn By	J.A.
	Date	04/12/2024	Checked By	D&OT
	Linda Doyle Director +353 (0)87 287 4190 linda@doyle-otroithigh.com		Daili O'Troithigh Director +353 (0)86 300 3480 daili@doyle-otroithigh.com	
		Office Address Pembroke House 28-29 Upper Pembroke St Dublin 2	Contact mail@doyle-otroithigh.com +353 (0)1 608 7782	